

Solid™ Oscillating Sprinkler M

Original instructions: Model 1070835

Fiskars Finland Oy Ab
Keilaniementie 10, P.O. Box 91
FI-02151 Espoo, Finland
Tel. +358 (0)204 3910

Fiskars brand is a registered trademark of Fiskars Corporation.

For packaging recycling information: fiskars.com/pack



ATTENTION:
Please read the manual before using.
Please include all documents when handing over the product to others

WARNING: Always close the water source (water tap) after use of the garden watering products. • Electric shock hazard -Do not direct the water jet on or near electrical connections, products or outlets. • Do not direct the water jet towards persons or animals. • No drinking water. • For non-commercial use only -commercial use will void guarantee. For watering use with outdoor home water faucet only. Not for indoor or appliance use. • Do not use with water exceeding 38°C. • Detach and drain before storing in frost free environment. • Do not leave product pressurised while unattended.

Disposal

IMPORTANT: Dispose of the product through or via your municipal recycling collection centre.

Warranty terms The manufacturer shall repair or replace, through the dealer, any parts of the product found to be faulty due to manufacturing defects, for a period of 24 months as of the date of purchase. This service is subject to the following provision: the device has been used for its intended purpose as per the recommendations in the user manual. The warranty does not cover defects due to tampering, improper use or wear. The warranty is valid only if the customer returns the product to the dealer complete in all its parts together with the receipt or other document proving the date of purchase. The warranty is fulfilled by supplying a fully functional replacement device or by repairing the faulty device. The manufacturer reserves the right to choose between these options.

EU Declaration of Conformity

According to Machinery Directive 2006/42/EC. We, Manufacturer: Fiskars Finland Oy Ab Address: Keilaniementie 10, 02150 Espoo, Finland, declare that the following product:

Product ID: 1070835

EAN: 6411501512765

Product name: Solid Oscillating Sprinkler M

Complies with all the relevant provisions of the following directive(s) and the corresponding national regulations; Machinery directive 2006/42/EC

Person authorized to compile the technical file: Juha Huhtala.
Ruukintie 22, 10330 Billnäs.

Signed for and on behalf of:
Fiskars Finland Oy Ab:
On 20.12.2023, in Billnäs, Finland.

Use

1. Pivot the sprinkler leg to crossing position (B)
2. Attach the sprinkler to a watering hose (F)
3. Turn on the water supply
OPTIONAL: Adjust the sprinkler settings for your watering need: Adjust the coverage distance and direction (D)
4. Turn off the water supply
5. Detach the sprinkler from the watering hose (F)
6. Drain the sprinkler before storing

Storage

1. Store in a frost-free environment. Product can be stored by using hanging loop (B).

Maintenance

To keep your sprinkler performing at its best:

1. Do not rotate the sprinkler's spray tube by hand (H).
2. Clean the sprinkler regularly.

For instructions, check the side section:

Cleaning guide or [video online](#)

Troubleshooting

PROBLEM:

Sprinkler does not rotate back and forth.

1. **POSSIBLE CAUSE:** Tap is closed.

SOLUTION: Open the tap.

2. **POSSIBLE CAUSE:** Insufficient water pressure.

SOLUTION: Lowest recommended operating pressure is 2 bars.

3. **POSSIBLE CAUSE:** Connected hose is twisted/ kinked.

SOLUTION: Check hose.

PROBLEM:

Sprinkler rotates to one side and stops.

POSSIBLE CAUSE: Insufficient water pressure.

SOLUTION: Lowest recommended operating pressure is 2 bars.

PROBLEM:

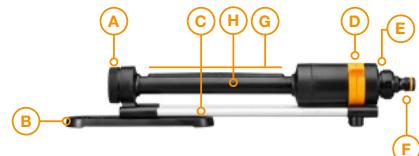
All nozzles in the sprinkler does not perform.

POSSIBLE CAUSE: Nozzles are blocked with debris or lime.

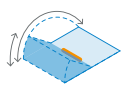

SOLUTION: Clean the sprinkler according to the **Cleaning guide**.

Oscillating sprinkler

- A. Removable cap for tube flushing / with included nozzle cleaning tool
- B. Pivoting leg with integrated hang hole for easy, compact storage
- C. Durable metal base for stability
- D. Intuitive controls
- E. Removable, rust-free filter for preventing dirt entering the tube
- F. Universal quick connector, works with other brands
- G. Spray nozzles
- H. Spray tube

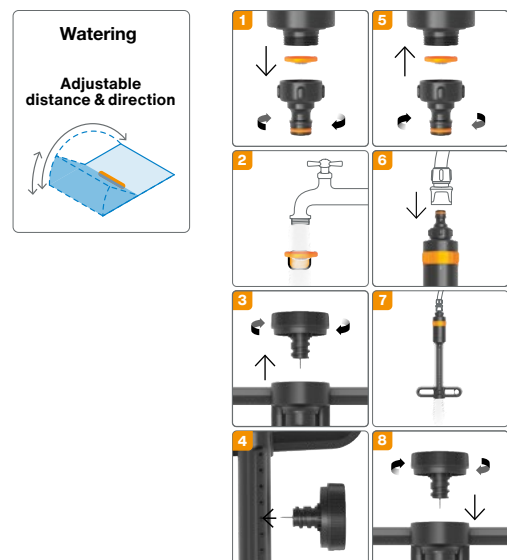


Coverage guidance

	2 bar / 29 psi	4 bar / 60 psi
	2-16 m	4-19 m
	13 m	15 m
	<210 m²	<285 m²

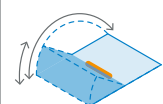
** Performance is related to operating pressure

Cleaning guide:



Watering

Adjustable distance & direction



OPERATING PRESSURE	15 – 60 Psi / 1 – 4 bar
OPERATING TEMPERATURE	5 – 50°C
MAX. WATER TEMPERATURE	38°C